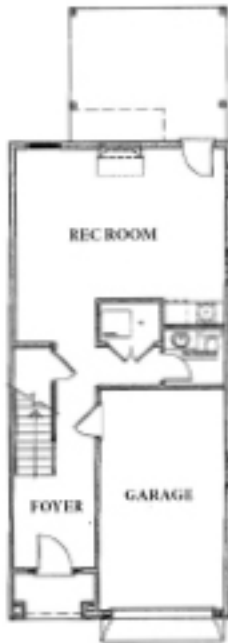




Bailey Floorplan



Total Footage: 2201



First Floor



Second Floor



Third Floor



**Third Floor w/3 BR*

*Optional Floorplan Upgrades available. Ask us for details.

**Be sure to reference the "Included Features" list for your community to confirm what features are included as some shown may be optional. All prices and specifications are subject to change without notice © 2017 Bedford Falls.



Barrymore Floorplan



FIRST FLOOR PLAN
10'-11" x 10'-0" (APPROXIMATE)

Total Footage: 1909



First Floor



Second Floor



Third Floor



**Third Floor
w/3 BR*

*Optional Floorplan Upgrades available. Ask us for details.

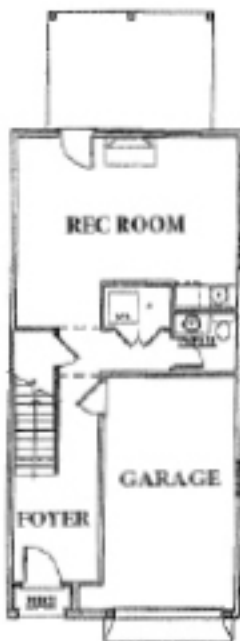
**Be sure to reference the "Included Features" list for your community to confirm what features are included as some shown may be optional.
All prices and specifications are subject to change without notice © 2017 Bedford Falls.



Wainwright Floorplan



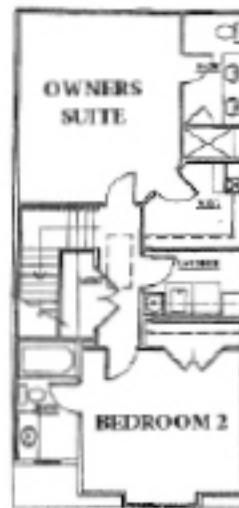
Total Footage: 2074



First Floor



Second Floor



Third Floor



**Third Floor w/3 BR*

*Optional Floorplan Upgrades available. Ask us for details.

**Be sure to reference the "Included Features" list for your community to confirm what features are included as some shown may be optional. All prices and specifications are subject to change without notice © 2017 Bedford Falls.